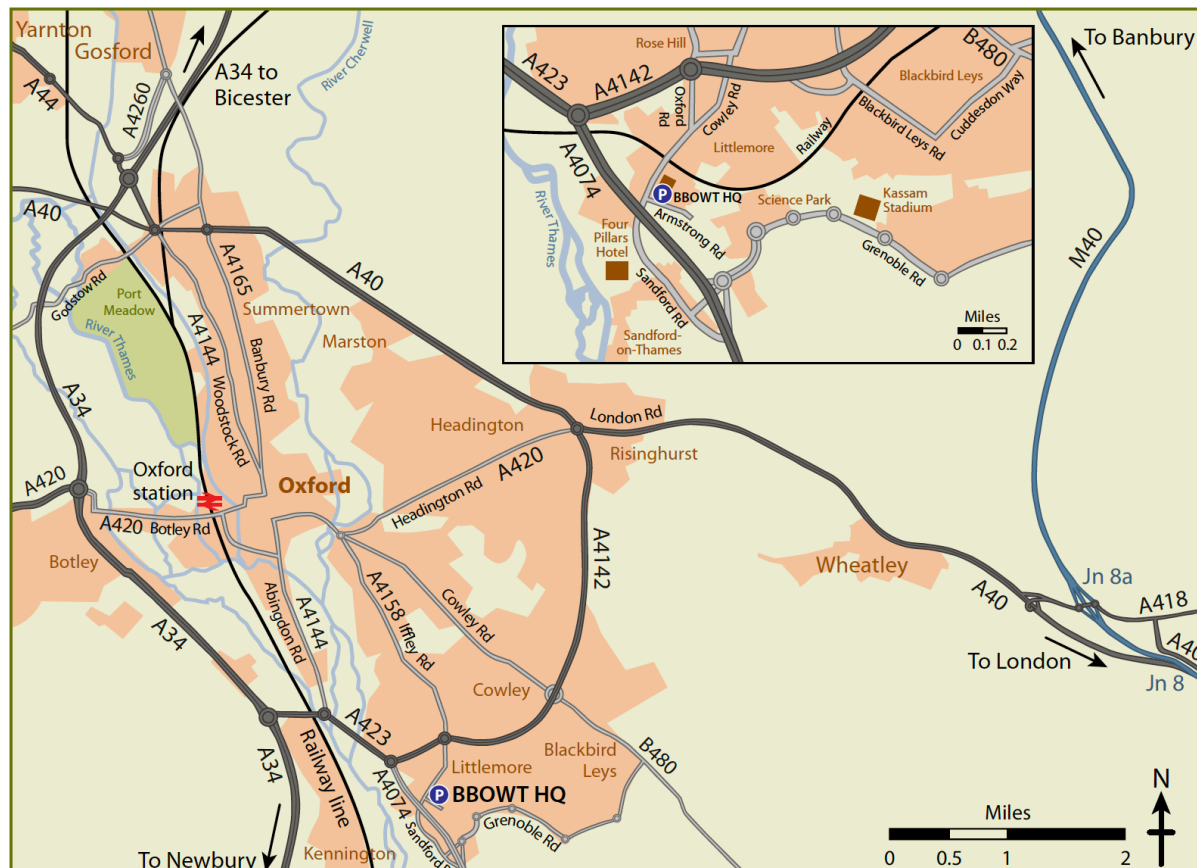


How to find us

BBOWT HQ

The Lodge, 1 Armstrong Road, Littlemore, Oxford, OX4 4XT



By car

From A34: Take the junction onto the A4142 (signposted the M40). Follow the signs for the A4142 until the forth roundabout, and take the 3rd exit onto Sandford Road. Follow the road, going straight across the mini roundabout and passing the George pub on the left. At the traffic lights, turn left onto Armstrong Road. You will see BBOWT HQ on your left. Parking is available on the road beside the Trust.

From A4074: From Reading take the exit signposted Littlemore. Continue straight on until the traffic lights then turn right. You will see BBOWT HQ on your left.



By rail

Oxford Railway Station is four miles from BBOWT HQ. The train station in Oxford is located at Park End Street, about 10 minutes' walk from the centre of town.



By bus

The bus to BBOWT HQ is the no. 106/7 bus run by Thames Travel, which goes to Watlington via the Oxford Science Park / Kassam Stadium. This bus runs every hour from the railway station or from the bus stop at St. Aldates in the centre of town.



On foot /bike

Follow either Iffley or Abingdon Road as shown on the map.

Phone: 01865 775476

Email: info@bbowt.org.uk