



WINDSOR
GREAT PARK

Berkshire
Buckinghamshire
Oxfordshire



Windsor Great Park Environmental Centre

A journey of learning and discovery



www.bbwt.org.uk



Programmes for Primary Schools at Windsor Great Park



Our experiential programmes take children on a journey of learning and discovery. We provide:



Skilled education staff to lead your day and engage children's heads, hearts and hands.



Imaginative activities that offer links with Early Learning Goals, Science and Geography and give opportunities for developing literacy and numeracy skills.



A wonderful location in a private area within the Great Park, providing indoor and outdoor classrooms for inspirational and exciting activities. Fantastic learning opportunities to be had in forest and grassland.

What you need to know when you visit



- » We offer fully-led days for pre-booked groups during January - October.
- » Trips usually run from 10am – 2.30pm but timings can be flexible.
- » There is a charge of £8 per child (or £5 for half-day programmes), adults are free. Minimum charge of £180 per group.
- » We can accommodate a group of up to around 30 children on any day.
- » The site and activities are risk assessed.
- » The centre is open to the public on family event days – please book online at bbowt.org.uk/events
- » The centre is located within Windsor Great Park, accessed at Forest Gate off the A332 between Windsor and Ascot, SL4 2BY.

If you love what we do, please consider becoming a member to support our work at bbowt.org.uk/join-us

Booking a trip is easy!
See the back page for details



Our programmes



Windsor Woodland Animal Adventure

EYFS and lower KS1

Children are invited by Windsor Woodmouse to have an adventure in the woods and learn the secrets of how wild animals survive.

Exciting hands-on activities build confidence in being outdoors and help children understand what animals need to stay alive. Follow the paw-print puzzle to find out who is who in the woods, make mini shelters and a sticky souvenir card to take home.

Spectacular Seasons

Reception and KS1

Choose from Spring into Spring, Summer Fun and Getting Ready for Winter. Throughout the seasons, learn about the important changes taking place in the natural world. Be a bird, a squirrel or bee and explore through hands-on activities, role play and games how plants and animals adapt and adjust to the ever-changing environment.





Minibeast Marvels

EYFS, KS1 and KS2

Meet a medley of minibeasts and learn what makes them different from the other animals that live in the Great Park and why so many of them love to live here.

Early Years options include:

bug hunts; stories; learning to care for the little creatures; counting minibeast body parts; and creative fun.

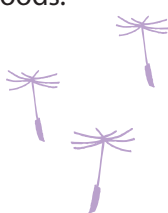
Options for KS1 & 2 include:

minibeast identification (keys); lifecycles; pollination; food chains; and adaptations.

Habitat Safari

KS1 and KS2

Investigate the creatures that live in the pond, meadow and woodland. Search for minibeasts with sweep nets and bug-hunting kits, and go pond-dipping. Use field guides and keys to identify and classify your creatures. Learn about life cycles, food chains and the adaptations of animals to these different habitats. Nature Detective Training is an alternative option – hunt for clues and solve a nature mystery in the woods.



More
programmes
overleaf



Pretty Plants and Buzzy Bees

KS1 and KS2

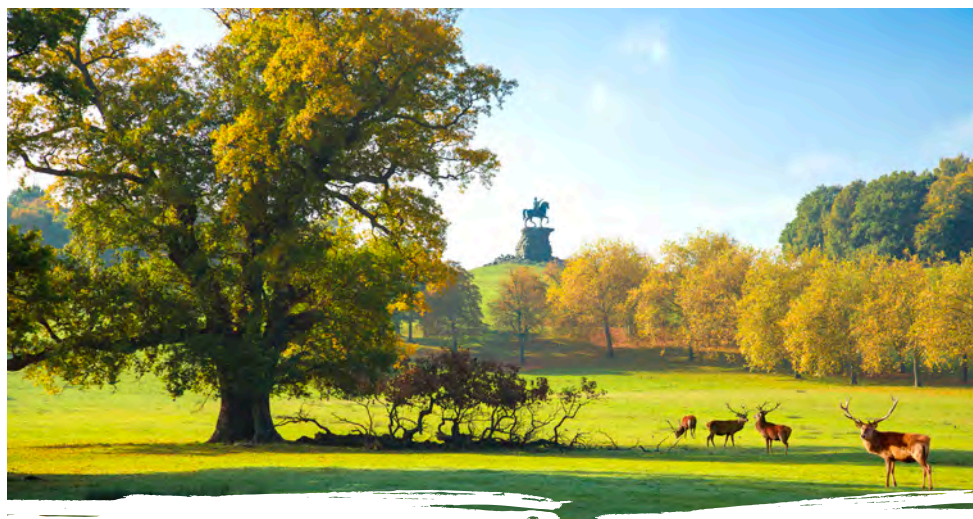
Learn about the lifecycle of plants, find seeds and discover how they are dispersed. Make a paper pot, sow some seeds that will flower for food for the bees (watch them grow at school). Learn about the parts of a plant, play team games to identify some common plants, dissect flowers to find eggs and pollen, and then dress up as a bee to pollinate a flower.

Intriguing Trees

Upper KS1 and KS2

Deciduous or Evergreen? Follow our tree trail to unlock the secret names of trees using a key and discover just how different tree seeds can be. Meet a tree, learn about its lifecycle and play the Food Factory Game to understand how trees make their own food and provide oxygen for all animals. Plant a tree seed to grow your very own. Identify the animals that live in the woods, from canopy to leaf litter and deep underground.





More about

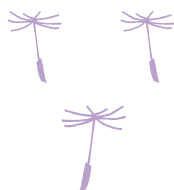
Windsor Great Park Environmental Centre

Windsor Great Park Environmental Centre is an exciting five year partnership project between the Berks, Bucks and Oxon Wildlife Trust and The Crown Estate.

Our new Environmental Centre right in the heart of the Park will allow visitors to experience the wonderful wildlife and amazing natural heritage in this unique setting.

Renowned for its ancient and veteran oak trees, the Park is home to many rare species of insects and fungi. Both adults and children will be inspired to discover the secrets of the plants and animals that make their home here.

For more information on our programme of workshops, activities and events for schools, families and young people visit **bbowt.org.uk/discover-learn**



Booking a trip is easy!



- » Use the contact details below to get in touch.
- » Discuss your top choices and confirm the date/s with us.
- » We will send out your booking pack, containing a booking form, risk assessments and location map.
- » Complete the booking form and send it back to us before you visit.

What children and teachers say about us

Another fantastic
day pitched at exactly
the right level for
our children
Year 2 teacher

I never knew
the small creatures
could be so cool!
Year 1 pupil

Today was
better than
Legoland!
Year 2 pupil

'It was fantastic
today! It was amazing,
I had so much fun'
Year 4 pupil

Photos: Becca Flintham, Helen Walsh, Ric Mellis, Mark Persad,
Gino Caiafa, Warwick Sweeney, Windsor Great Park, BBOWT

Contact us 

berkshireeducation@bbowt.org.uk

01628 829574 x 214



Berks, Bucks & Oxon Wildlife Trust
working in partnership with

**THE CROWN
ESTATE**