

Berkshire
Buckinghamshire
Oxfordshire



Sutton Courtenay Environmental Education Centre



A journey of learning and discovery

www.bbwt.org.uk



Education programmes for Primary Schools at Sutton Courtenay



Our experiential programmes take children on a journey of learning and discovery. We provide:



A skilled education team to lead your day and engage children's heads, hearts and hands.



Imaginative activities that offer links with Early Learning Goals, Science and Geography and give opportunities for developing literacy and numeracy skills.



A wonderful setting on a beautiful 19 acre nature reserve with woodland, meadow and ponds. Sutton Courtenay Environmental Education Centre is a haven for wildlife and an exhilarating green space for your pupils to enjoy.

What you need to know when you visit



- » We offer fully-led days for pre-booked groups year round.
- » Trips usually run from 10am – 2.30pm but timings can be flexible.
- » We request a donation of £7 per child (or £4.50 for Nature Explorers), adults are free.
- » Minimum donation of £120 per class.
- » All activities are fully risk assessed.
- » The centre is open to the public on family event days – please book online at www.bbowt.org.uk/whats-on
- » We are located in Milton Park off the A34, three miles north-west of Didcot.

Each child's visit is subsidised by the Berks, Bucks and Oxon Wildlife Trust, through our members' subscriptions. If you love what we do, please consider becoming a member to support our work at bbowt.org.uk/join

Booking a
trip is easy!
See the back page
for details



Our programmes



Nature Explorers

EYFS (1/2 day programme)

An exciting programme of hands-on exploration and discovery. The perfect introduction to outdoor learning for your little ones.

Children build confidence, practise communication, undertake physical challenges and develop their understanding of the world.

Choose from either our **Mini-beast** or **Teddy Bears' Picnic** themed adventure, which includes magical sensory activities and creative fun. Let's see where our exploration takes us!

Teddy Bears Picnic

Reception and Lower KS1

A great introduction to enjoying the outdoors, this programme teaches and encourages respect for the natural world.

Children are invited by Teddy Edward to bring their teddies for an adventure in the woods and learn the secrets of how wild animals survive.





Sensational Senses

Reception and KS1



Experience the world through the eyes, noses, ears and paws of different animals.

Children will meet some of our local animals and discover how they use their super-senses to help them survive and find food.

Finish your adventure with a trip to the amazing 'nature's theatre'.

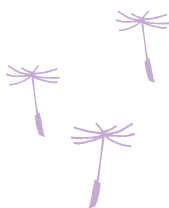
Spectacular Seasons

KS1

Choose from **Spring into Spring**, **Summer Fun** and **Getting Ready for Winter**.

Learn about the cycle of the seasons and the important changes taking place in the natural world.

Explore through fun games, hands-on activities and role play, ways in which animals and plants adjust to the ever-changing environment.



More
programmes
overleaf



Habitat Safari

Upper KS1 and KS2

A hand's-on day discovering the wonders of nature. Choose three one-hour sessions:

Sensory Nature Walk

Experience sights, smells and sounds.

Pond Dipping

Hands-on exploration of the pond.

Mini-Beast Hunt

Explore the woodland or the meadow.

Micro-Parks

Create mini nature parks in the woods.

Nature Detective Training

Hunt for clues and solve a nature mystery in the woods.

Fascinating Flowers and Intriguing Trees

KS1 and KS2

Enter a world of flowers and trees and find out just how important plants are to our everyday lives.

Learn the lifecycle of a plant: explore the reserve to find seeds and discover how they are dispersed; learn about the parts of a plant and dress up as a bee to pollinate a flower.

Take part in the tree ID challenge – how many can you identify?



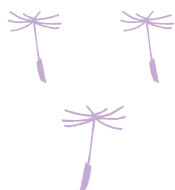


Story Seekers

KS2

Get your class inspired by Sutton Courtenay as you go on your adventure. Discover the exciting tales of our wildlife, enjoy outdoor sensory activities and solve a mystery in the woods.

This creative day is crafted to spark ideas, give inspiration to all young writers, and complement literacy activities when you get back to school. Tales and wildlife exploration will engage the whole class and wake up all your imaginations!



Life Cycles Detective

Upper KS2

Investigate the intriguing lifecycles of our plants and animals.

Use your detective skills to decipher which animals young you are looking at. Then, through hands-on investigation, explore the reserve in search of plants at different stages of growth. Starting in the compost heap, follow the journey of a seed through to a flower.



Booking a trip is easy!



- » Use the contact details below to get in touch.
- » Discuss your topic choices and confirm the date/s with us.
- » We'll send out your booking pack, containing a booking form, risk assessments and location map.
- » Complete the booking form and send it back to us before you visit.

What children and teachers say about us

'I wish this was
our new school and
we could come
here everyday.'
Reception pupil

'It's the best trip
of the year and offers
the children chances they
don't usually have, living
in an urban area'
Year 4 teacher

'The adults and children
were buzzing from the
gorgeous space and
enthusiasm of the staff'
Year 1 teacher

'Best trip
ever!'
Year 2 pupil

Contact us



sceec@bbowt.org.uk

01235 862024

Sutton Courtenay Environmental Education Centre
Sutton Courtenay Road, Sutton Courtenay,
Abingdon, OX14 4TE

