

Berkshire
Buckinghamshire
Oxfordshire



Lynn Hughes
Education Manager



Woolley Firs

Environmental Education Centre

A journey of learning and discovery



Education programmes for Primary Schools at Woolley Firs



Our experiential programmes take children on a journey of learning and discovery. We provide:



A skilled education team to lead your day and engage children's heads, hearts and hands.



Imaginative activities that offer links with Early Learning Goals, Science and Geography and give opportunities for developing literacy and numeracy skills.



A wonderful setting on a 300 year-old farm and nature reserve, an education centre in a renovated barn full of exciting resources, and fantastic outdoor learning spaces in our woodland and meadows.

What you need to know when you visit



- » We offer fully-led days for pre-booked groups year round.
- » Trips usually run from 10am – 2.30pm but timings can be flexible.
- » We request a donation of £7 per child (or £4.50 for half-day programmes), adults are free.
- » Minimum donation of £120 per group.
- » The centre is open to the public on family event days – please book online at www.bbowl.org.uk/whats-on
- » We are located off the A4, three miles west of Maidenhead.

Each child's visit is subsidised by the Berks, Bucks and Oxon Wildlife Trust, through our members' subscriptions. If you love what we do, please consider becoming a member to support our work at bbowl.org.uk/join

Booking a
trip is easy!
See the back page
for details



Our programmes



Teddy Bears' Picnic

EYFS and lower KS1

Children are invited by Teddy Edward to bring their teddies to have an adventure in the woods and learn the secrets of how wild animals survive. Put on a teddy disguise and help save the trees from the woodcutter! Exciting hands-on activities build confidence in being outdoors and help children understand what animals need to stay alive. Create a rainbow teddy using the colours of the woodland to take home.



Sensational Senses

Reception and KS1

Experience the world through the eyes, noses, ears and paws of different animals. Discover how moles find their way in the dark and learn about sparrowhawks' keen eyesight. Find out about badgers' brilliant sense of smell and foxes' fantastic sense of hearing. Take part in a sensory scavenger hunt or a production of 'Nature's Theatre' and hold baby insects to see their unusual sense organs close up!





Minibeast Pick 'n' Mix

EYFS, KS1 and KS2

Meet a medley of minibeasts and learn what makes them different from the other animals inhabiting Woolley Firs.

Early Years options include:

bug hunts; stories; learning to care for the little creatures; counting minibeast body parts; and creative fun.

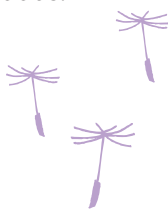
Options for KS1 & 2 include:

minibeast identification (keys); lifecycles; pollination; food chains; and adaptations.

Habitat Safari

KS1 and KS2

Investigate the creatures that live in Woolley Firs' pond, meadow and woodland. Search for minibeasts with sweep nets and bug-hunting kits and go pond-dipping. Use field guides and keys to identify and classify your creatures. Learn about life cycles, food chains and the adaptations of animals to these different habitats. Alternatively undertake Nature Detective training – hunt for clues and solve a nature mystery in the woods.



More
programmes
overleaf



Fancy Plants and Tremendous Trees

KS1 and KS2

Learn about the lifecycle of plants: explore the woodland to find seeds and discover how they are dispersed; make a paper pot and sow seeds (watch them grow at school); learn about the parts of a plant; dissect flowers to find eggs and pollen and then dress up as a bee to pollinate a flower. Take part in the 'Secret Names of Trees' identification game using Smartphone keys.

Our Farm: Crops, Seeds, Birds and Bees

Upper KS1 and KS2

Find out about food production on the 300 year-old Woolley Firs farm & discover how the farmer helps wildlife and why wildlife is so important to the farmer. Play 'farm bingo' on a guided farm tour. Go bird-spotting, be a bee, see our crops growing and pick your own. Make muesli & see how cooking oil is made. Have a go at worm-charming or meet the minibeasts that live in the farmer's fields and hedges.





Amazing Adaptations

Upper KS2

Head out for some detective work - search for clues about how Woolley Firs has changed over time - from a tropical ocean to a land trodden by woolly rhinos and now to an arable farm. This investigation provides the basis for a series of hands-on workshops looking at animal and plant adaptations so students can answer questions such as 'why are sundews sticky? Learn about great tit song - an example of modern-day 'evolution in action' and how to 'ape' our closest animal cousin - the chimpanzee.



Go Wild @ Your School

We'd love to bring our expertise and resources to you

We offer the following outdoor wildlife workshops between September and February:

Nature Discovery

Choose two from pond dipping, bug hunt, sensory earth-walk, or owl pellet dissection.

Outdoor Adventure

Includes animal tracking, nest building and 'fun with sticks'.

How to Help Wildlife

Includes making bird feeders, bug hotels, and log-pile homes.

Please see www.bbowl.org.uk for more details

Booking a trip is easy!



- » Use the contact details below to get in touch.
- » Discuss your topic choices and confirm the date/s with us.
- » We'll send out your booking pack, containing a booking form, risk assessments and location map.
- » Complete the booking form and send it back to us before you visit.

What children and teachers say about us

Another fantastic day pitched at exactly the right level for our children
Year 2 teacher

I never knew the small creatures could be so cool!
Year 1 pupil

Today was better than Legoland!
Year 2 pupil

'There are always things to improve but in this case I can think of absolutely nothing!'
Year 4 teacher

Photos: Ric Mellis and BBOWT

Contact us 

berkshireducation@bbowt.org.uk

01628 829 574 x 214

Woolley Firs Environmental Education Centre,
Woolley Firs, Cherry Garden lane,
Maidenhead, SL6 3LJ

