

Berkshire
Buckinghamshire
Oxfordshire



College Lake

Environmental Education Centre

A journey of learning and discovery

www.bbwt.org.uk



Education programmes for Primary Schools at College Lake



Our experiential programmes take children on a journey of learning and discovery. We provide:



A skilled education team to lead your day and engage children's heads, hearts and hands.



Imaginative activities that offer links with Early Learning Goals, Science and Geography and give opportunities for developing literacy and numeracy skills.



A beautiful nature reserve teeming with wildlife, created on the site of an old chalk quarry. Whatever the season, College Lake is the ideal place to visit for a day of learning outside the classroom.

What you need to know when you visit



- » We offer fully-led days for pre-booked groups year round.
- » Trips usually run from 10am – 2.30pm but timings can be flexible.
- » We request a donation of £7 per child (or £4.50 for half-day programmes), adults are free.
- » Minimum donation of £120 per group.
- » The visitor centre and reserve are open daily. Look out for our family event days. Please book online at www.bbwt.org.uk/whats-on
- » We are located in Bulbourne, on the B488 between the A41 and Ivinghoe (two miles north of Tring).

Each child's visit is subsidised by the Berks, Bucks and Oxon Wildlife Trust, through our members' subscriptions. If you love what we do, please consider becoming a member to support our work at bbwt.org.uk/join

Booking a
trip is easy!
See the back page
for details



Our programmes



Teddy Bears' Picnic

Reception and Lower KS1

Enjoy a day of stories, games and sensory outdoor exploration and remember, there is also a picnic in the woods so don't forget to bring your teddy!

Discover the four secrets of life that enable all animals to survive. Create a new home for your bear and watch out for signs of Chief Teddy Edward. A wonderful introduction to the natural world for your youngest children.



Habitat Safari

Upper KS1 and KS2

Hands-on nature discovery that your class will never forget. Choose three one-hour sessions:

Sensory Nature Walk

Experience sights, smells, sounds and touches.

Pond Dipping

Hands-on exploration of the pond.

Nature Detective Training

Hunt for clues and solve a nature mystery in the woods.

Bug Hunting

Hunt for mini-beasts in our woodland and meadow.

Bird Watching

Spot wetland and garden birds.

Micro-parks

Create a magical, mini-world in the woods.



Geology Rocks

KS2

Travel back in time and discover what College Lake was like millions of years ago when the land was under a tropical ocean.

Find out how the chalk, fossils and rocks were formed and what secret discoveries have been uncovered. Enjoy a day of time travel through role play, walks and hands-on exploration.

Discover how the landscape has changed and about the amazing wildlife which once made its home here.



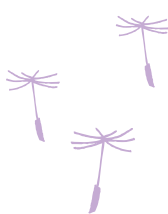
Home Sweet Home

KS2

A habitats day with a twist. Come along and meet the Mayor of College Lake and Judge Mop-head!

Through walks, simple role-play, discussion and debate, face the challenge of survival as an animal or plant.

Later take on the role of Habitat Surveyors to save the woodland and work together to prove that wildlife is interconnected, adapted to its surroundings and needs protection.



More
programmes
overleaf



A Wild Tale

KS2



Let College Lake inspire your children as they go on their very own wild adventure.

Meet the warden and listen to his stories, enjoy outdoor sensory activities, solve a mystery in the woods and even put on a special play.

This creative day is crafted to spark ideas, give inspiration to all young writers, and complement literacy activities when you get back to school. Tales and wildlife exploration will engage the whole class and wake up all your imaginations!

Earth Caretakers

Upper KS2

Take part in a day of exploration and adventure to learn five secrets of planet Earth.

Go on a magical nature walk, discover a lost secret, learn about food chains on our energy flow training and solve a riddle.

Your young Earth Caretakers can begin to see how they can make a difference to their planet and use ideas back at school.





Go Wild @ Your School

We'd love to bring our expertise and resources to you

We offer the following outdoor wildlife workshops between September and February:

Nature Discovery

Choose two from pond dipping, bug hunt, sensory earth-walk, or owl pellet dissection.

How to be a Nature Detective

Hunt for clues and investigate animal tracks and signs. Find out more about the animals that leave them behind.

Please see www.bbowt.org.uk for more details



Meadow Farm

Bucks/Oxon border near Bicester

Historic wildflower hay meadows, hedges and ponds provide a wonderful resource for local schools to visit for hands-on outdoor learning.

To find out more contact the team:
collegelakeeducation@bbowt.org.uk
or call **01442 826774**



Booking a trip is easy!



- » Use the contact details below to get in touch.
- » Discuss your topic choices and confirm the date/s with us.
- » We'll send out your booking pack, containing a booking form, risk assessments and location map.
- » Complete the booking form and send it back to us before you visit.

What children and teachers say about us

'A magical trip,
which we would highly
recommend, thank you!'

Teacher,
Ashmead School

'At the end my head
was whirling with sounds
and thoughts of nature.'

Year 1 child,
Newton Blossomville School

'A wonderful
day with fantastic learning
opportunities in picturesque
surroundings.'

Staff member,
Buckingham Park School

Contact us



collegelakeeducation@bbowt.org.uk

01442 826774

College Lake Environmental Education Centre,
Upper Icknield Way, Bulbourne, Tring, HP23 5QG

