



**Berkshire
Buckinghamshire
& Oxfordshire**
Wildlife Trust

Woolley Firs



Environmental Education Centre

A journey of learning and discovery



Education programmes for Primary Schools at Woolley Firs



Our experiential programmes take children on a journey of learning and discovery. We provide:



A skilled education team to lead your day and engage children's heads, hearts and hands.



Imaginative activities that offer links with Early Learning Goals, Science and Geography and give opportunities for developing literacy and numeracy skills.



A wonderful setting on a 300 year-old farm and nature reserve, an education centre in a renovated barn full of exciting resources, and fantastic outdoor learning spaces in our woodland, meadows and pond areas.

What you need to know when you visit



- » We offer fully-led days for pre-booked groups year round.
- » Trips usually run from 10am – 2.30pm but timings can be flexible.
- » We request a donation, please visit our website for more information.
- » The centre is open to the public on family event days, Ranger clubs, Home Education days, Nature Tots and for adult workshops – please book online at bbowt.org.uk/events
- » We also offer A Level and AS Level Biology and Environmental Science Field Days.
- » We are located off the A4, three miles west of Maidenhead.

Each child's visit is subsidised by the Berks, Bucks & Oxon Wildlife Trust, through our members' subscriptions. If you love what we do, please consider becoming a member to support our work at bbowt.org.uk/join

Booking a trip is easy!
See the back page for details



Our programmes



Teddy Bears' Picnic

EYFS and lower KS1

Children are invited by Teddy Edward to bring their teddies to have an adventure in the woods and learn the secrets of how wild animals survive. Put on a teddy disguise and help save the trees from the woodcutter!

Exciting hands-on activities build confidence in being outdoors and help children understand what animals need to stay alive. Create a rainbow teddy using the colours of the woodland to take home.



Sensational Senses

Reception and KS1

Experience the world through the eyes, noses, ears and paws of different animals.

Discover how moles find their way in the dark and learn about sparrowhawks' keen eyesight. Find out about badgers' brilliant sense of smell and foxes' fantastic sense of hearing. Take part in a sensory scavenger hunt or a production of 'Nature's Theatre' and hold baby insects to see their unusual sense organs close up!





Minibeast Pick 'n' Mix

EYFS, KS1 and KS2

Meet a medley of minibeasts and learn what makes them different from the other animals inhabiting Woolley Firs.

Early Years options include:

bug hunts; stories; learning to care for the little creatures; counting minibeast body parts; and creative fun.

Options for KS1 & 2 include:

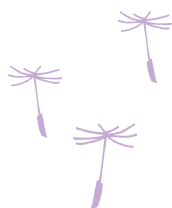
minibeast identification (keys); lifecycles; pollination; food chains; and adaptations.



Habitat Safari

KS1 and KS2

Investigate the creatures that live in Woolley Firs' pond, meadow and woodland. Search for minibeasts with sweep nets and bug-hunting kits and go pond-dipping. Use field guides and keys to identify and classify your creatures. Learn about life cycles, food chains and the adaptations of animals to these different habitats. Alternatively undertake Nature Detective training – hunt for clues and solve a nature mystery in the woods.



More
programmes
overleaf



Fancy Plants & Tremendous Trees

KS1 and KS2

Learn about the lifecycle of plants: explore the woodland to find seeds and discover how they are dispersed; make a paper pot and sow seeds (watch them grow at school); learn about the parts of a plant; dissect flowers to find eggs and pollen and then dress up as a bee to pollinate a flower. Take part in the 'Secret Names of Trees' identification game using Smartphone keys.



Amazing Adaptations

Upper KS2

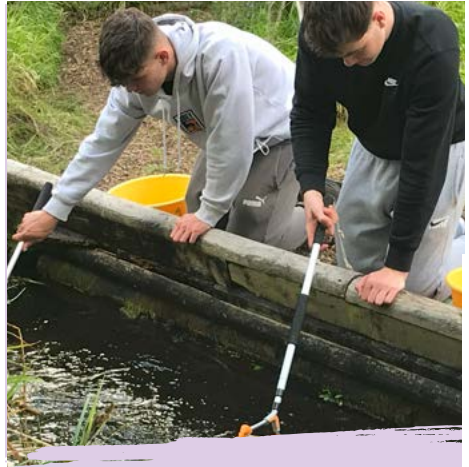
Head out for some detective work - search for clues about how Woolley Firs has changed over time – from a tropical ocean to a land trodden by woolly rhinos and now to a range of wildlife friendly aquatic, meadow and woodland habitats. This investigation provides the basis for a series of hands-on workshops looking at animal and plant adaptations so students can answer questions such as 'why are sundews sticky? Learn about great tit song – an example of modern-day 'evolution in action' and how to 'ape' our closest animal cousin – the chimpanzee.



Lifecycles and Classification

KS2

Detailed lifecycle discovery of a range of animals and plants, using living specimens and including investigative games, illustrating, for example, how plant seeds are formed as part of sexual reproduction. Explore and find a variety of creatures in their aquatic or woodland habitat and learn how to classify them 'in the field'.



A and AS level Biology and Environmental Science Fieldwork

- » Sessions tailored for a variety of exam boards
- » Flexible modular day
- » Fully risk assessed sites and programmes
- » Beautiful range of habitats including ponds
- » Real life data for statistical analysis use back at school

Please email
berkshireducation@bbowt.org.uk
or go to our website at
bbowt.org.uk/woolley-firs-berks

Booking a trip is easy!



- » Use the contact details below to get in touch.
- » Discuss your topic choices and confirm the date/s with us.
- » We'll email your booking pack, containing a booking form, risk assessments and location maps.
- » Complete the booking form and send it back to us before you visit.
- » Talk to us if any of your group has additional needs.

What children and teachers say about us

Another fantastic day pitched at exactly the right level for our children
Year 2 teacher

'Another successful ecology trip for our students. They gain a huge amount of knowledge with you in the field'
Year 12 teacher.

I never knew the small creatures could be so cool!
Year 1 pupil

'There are always things to improve but in this case I can think of absolutely nothing!'
Year 4 teacher



Contact us 

berkshireeducation@bbowt.org.uk
01628 829 574

Woolley Firs Environmental Education Centre,
Woolley Firs, Cherry Garden lane,
Maidenhead, SL6 3LJ