

Berkshire  
Buckinghamshire  
Oxfordshire

A woman in a purple hoodie is pointing upwards in a lush green forest. Two children, a girl in a white hoodie and a girl in a pink hoodie holding a camera, are looking up at her. A butterfly is visible in the bottom right corner.

# Sutton Courtenay Environmental Education Centre

*A journey of learning and discovery*



# Education programmes for Primary Schools at Sutton Courtenay



Our experiential programmes take children on a journey of learning and discovery. We provide:



A skilled education team to lead your day and engage children's heads, hearts and hands.



Imaginative activities that offer links with Early Learning Goals, Science and Geography and give opportunities for developing literacy and numeracy skills.



A wonderful setting on a beautiful 19 acre nature reserve with woodland, meadow and ponds. Sutton Courtenay Environmental Education Centre is a haven for wildlife and an exhilarating green space for your pupils to enjoy.



# What you need to know when you visit



- » We offer fully-led days for pre-booked groups year round.
- » Trips usually run from 10am – 2.30pm but timings can be flexible.
- » We request a donation of £8 per child (or £5 for Nature Explorers), adults are free.
- » Minimum donation of £180 per class.
- » All activities are fully risk assessed.
- » The centre is open to the public on family event days – please book online at [www.bbwt.org.uk/whats-on](http://www.bbwt.org.uk/whats-on)
- » We are located in Milton Park off the A34, three miles north-west of Didcot.

Each child's visit is subsidised by the Berks, Bucks and Oxon Wildlife Trust, through our members' subscriptions. If you love what we do, please consider becoming a member to support our work at [bbwt.org.uk/join](http://bbwt.org.uk/join)

Booking a trip is easy!  
See the back page for details



# Our programmes



## Nature Explorers

### EYFS (1/2 day programme)

An exciting programme of hands-on exploration and discovery. The perfect introduction to outdoor learning for your little ones.

Children build confidence, practise communication, undertake physical challenges and develop their understanding of the world.

Choose from either our **Mini-beast** or **Teddy Bears' Picnic** themed adventure, which includes magical sensory activities and creative fun. Let's see where our exploration takes us!

## Teddy Bears Picnic

### Reception and Lower KS1

A great introduction to enjoying the outdoors, this programme teaches and encourages respect for the natural world.

Children are invited by Teddy Edward to bring their teddies for an adventure in the woods and learn the secrets of how wild animals survive.





## Sensational Senses

### Reception and KS1



Experience the world through the eyes, noses, ears and paws of different animals.

Children will meet some of our local animals and discover how they use their super-senses to help them survive and find food.

Finish your adventure with a trip to the amazing 'nature's theatre'.

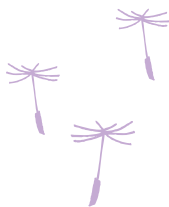
## Spectacular Seasons

### KS1

Choose from **Spring into Spring**, **Summer Fun** and **Getting Ready for Winter**.

Learn about the cycle of the seasons and the important changes taking place in the natural world.

Explore through fun games, hands-on activities and role play, ways in which animals and plants adjust to the ever-changing environment.



More  
programmes  
overleaf



## Habitat Safari

### Upper KS1 and KS2

A hand's-on day discovering the wonders of nature. Choose three one-hour sessions:

#### **Sensory Nature Walk**

Experience sights, smells and sounds.

#### **Pond Dipping**

Hands-on exploration of the pond.

#### **Mini-Beast Hunt**

Explore the woodland or the meadow.

#### **Micro-Parks**

Create mini nature parks in the woods.

#### **Nature Detective Training**

Hunt for clues and solve a nature mystery in the woods.



## Fascinating Flowers and Intriguing Trees

### KS1 and KS2

Enter a world of flowers and trees and find out just how important plants are to our everyday lives.

Learn the lifecycle of a plant: explore the reserve to find seeds and discover how they are dispersed; learn about the parts of a plant and dress up as a bee to pollinate a flower.

Take part in the tree ID challenge – how many can you identify?





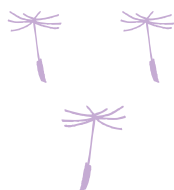


## Story Seekers

**KS2**

Get your class inspired by Sutton Courtenay as you go on your adventure. Discover the exciting tales of our wildlife, enjoy outdoor sensory activities and solve a mystery in the woods.

This creative day is crafted to spark ideas, give inspiration to all young writers, and complement literacy activities when you get back to school. Tales and wildlife exploration will engage the whole class and wake up all your imaginations!



## Life Cycles Detective

**Upper KS2**

Investigate the intriguing lifecycles of our plants and animals.

Use your detective skills to decipher which animals young you are looking at. Then, through hands-on investigation, explore the reserve in search of plants at different stages of growth. Starting in the compost heap, follow the journey of a seed through to a flower.



# Booking a trip is easy!



- » Use the contact details below to get in touch.
- » Discuss your topic choices and confirm the date/s with us.
- » We'll send out your booking pack, containing a booking form, risk assessments and location map.
- » Complete the booking form and send it back to us before you visit.

## What children and teachers say about us

'I wish this was our new school and we could come here everyday.'  
Reception pupil

'It's the best trip of the year and offers the children chances they don't usually have, living in an urban area'  
Year 4 teacher

'The adults and children were buzzing from the gorgeous space and enthusiasm of the staff'  
Year 1 teacher

'Best trip ever!'  
Year 2 pupil

## Contact us



[sceec@bbowt.org.uk](mailto:sceec@bbowt.org.uk)

01235 862024

Sutton Courtenay Environmental Education Centre  
Sutton Courtenay Road, Sutton Courtenay,  
Abingdon, OX14 4TE

