



Scavenger hunt

Whatever the weather, there's loads to see and do outdoors, right here in your own neighbourhood. Go on a scavenger hunt and draw, write about or stick what you found in the boxes below.

How many of these can you find?

1

Find a piece of bark – what kind of tree do you think this is from?

2

Find a hairy leaf – what are the hairs for?

3

Find an acorn – what tree is it from?

4

Find a feather – what bird do you think this is from?

5

Find a spiders web – draw it here

6

Find something you think is a treasure – what is it?

Go Wild in your neighbourhood

Wherever you live, you are never far from fun outdoor activities with your local Wildlife Trust. We have loads of events for kids (and grown-ups too), from pond dipping to exciting nature trails. We also have over 2000 nature reserves for you to explore!

The southern Wildlife Trusts and The Southern Co-operative have teamed-up to help you discover wildlife and have loads of outdoor fun. To find out what's going on in your local area, visit:

www.thesouthernco-operative.co.uk/makingadifference/wildlife-trusts/



FREE



Swing



Go Wild Guide

Life is more fun when it's wild!

Have a wild family adventure with your FREE Go Wild Guide from the southern Wildlife Trusts and The Southern Co-operative.

Go on - add a bit of wildness into your lives!



Leap



Discover



Learn

Fun games and activities inside



How to make your own bird feeder

wildlife watch



What you need:

- dry ingredients
 - bird seed
 - cooked rice
 - grated cheese
 - dried fruit
 - breadcrumbs
 - chopped nuts
- hard cooking fat (lard or dripping)
- a fir cone, coconut shell or yoghurt pot
- string



1 Mix all the dry ingredients together in a bowl



2 Add the fat and give it a good mix around

3 Choose your feeder



plaster all over a fir cone



put it round the inside of a coconut shell



press into a yoghurt pot

You can hang this upside down like a bell or turn it out like a cake

4 Hang your feeders with string (you may need to make holes and tie the string in before adding the mix)



Hang your feeder where you can watch birds without disturbing them

If you need to melt the fat, ask an adult to help



Go Wild at home



Even in a small space you can plant pots of nectar-rich flowers for bees and butterflies or put up a bird feeder on your window

Illustration: Corinna Welch © Copyright Royal Society of Wildlife Trusts 2015

Are you looking for a new way to explore wildlife and have fun?

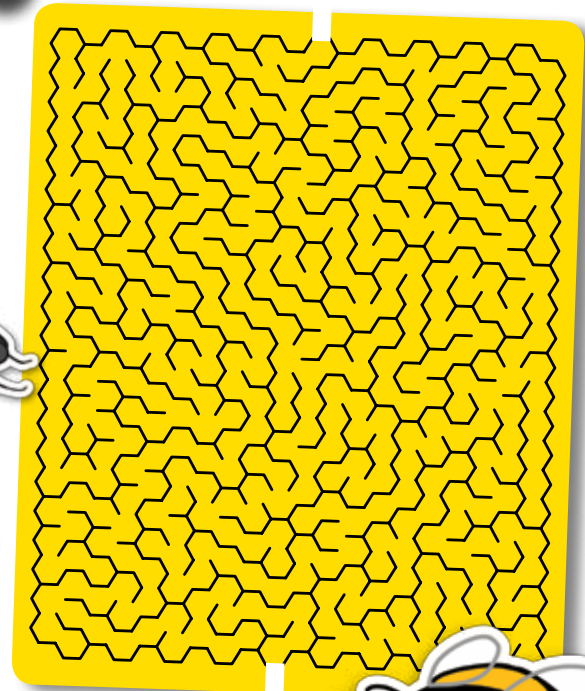
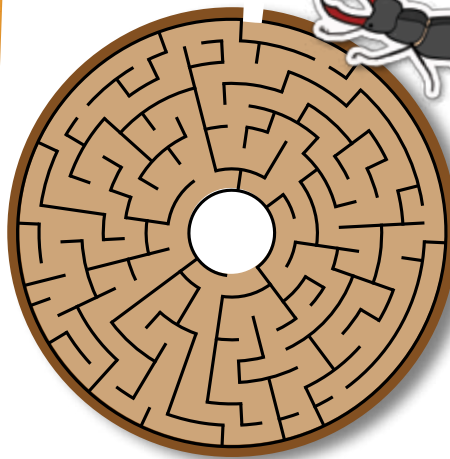
Then come along to a nature club near you! Have a go at bat detecting, pond dipping, campfire cooking and much more! Find one near you:

www.wildlifetrusts.org/natureclubs



Puzzle challenge

Help the Stag beetle and the Bee find their way home.



Go Wild I-Spy Challenge



You can watch and enjoy wildlife anywhere – out of your bedroom window, in your garden or local park or on your way to school. Look and listen carefully and see what you can spot.



Robin



Blackbird



Blue Tit



House Sparrow



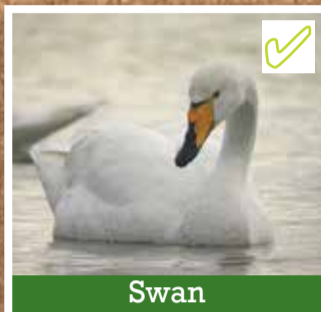
Chaffinch



Fox



Moorhen



Swan



Peacock butterfly



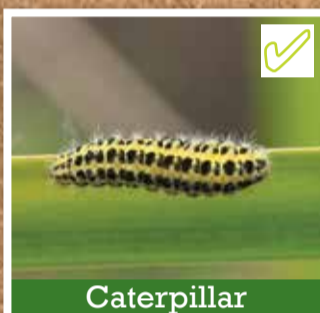
Bumblebee



Pheasant



Woodlouse



Caterpillar



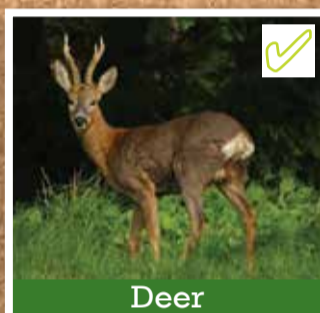
Daisy



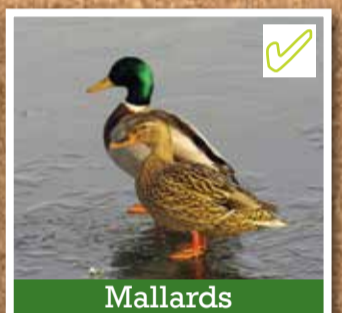
Dandelion



Frog



Deer



Mallards



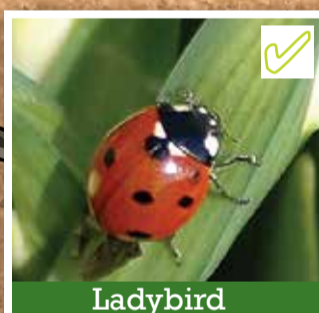
Grey Squirrel



Rabbit



Hedgehog



Ladybird



Earthworm



Snail

Love Wildlife?

Become a family member of your local Wildlife Trusts. You'll receive loads of exciting wildlife goodies including a kids' magazine full of amazing pictures, puzzles, and competitions. Visit www.wildlifetrusts.org/join



How to Make an insect hotel

the express way!

- What you need:
- hollow plant stems, like bamboo canes
 - twigs and sticks
 - string

- 1 Collect handfuls of stems, twigs and sticks.
- 2 Tie the bundles quite tightly in two places.
- 3 Post into a hedge/bush or hang in a sheltered place.

the deluxe way!

What you need:

- Small logs or untreated timber
- hollow plant stems, like bamboo canes
- twigs and sticks
- An adult to help with tools:
 - woodsaw
 - nails and hammer or screwdriver and wood screws
 - drill and 5mm wood bit

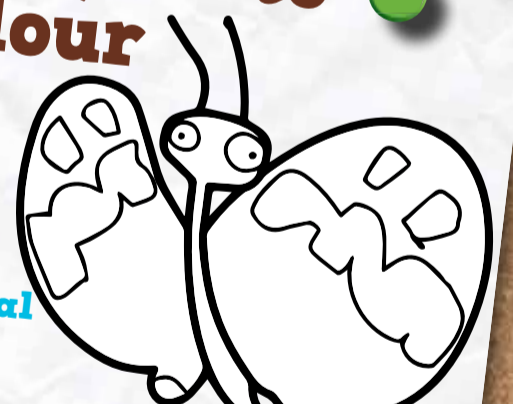
- 1 Make a wooden frame, fixing the wood with screws or nails.
- 2 Fill the frame with stems, twigs and sticks.
- 3 Fix a wire loop to the back of the frame and hang somewhere sheltered.

Illustration: Corinne Welch © Copyright Royal Society of Wildlife Trusts 2015

For you to colour



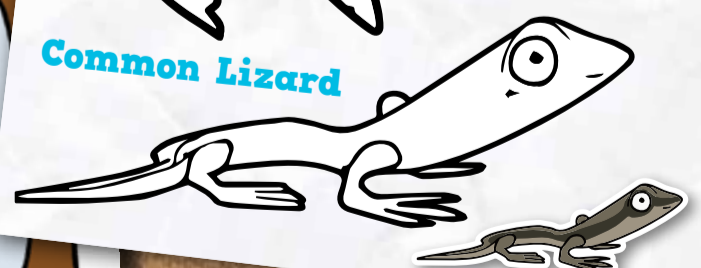
Red Admiral Butterfly



Common Lizard



Goldfinch



share your wild experiences with us
#MyWildNeighbourhood